



uxoradar

uxocp

PRO 7

English User Manual

2021

Contents

1. GENERAL FEATURES:	3
1.1. Frequency Generator:	3
1.2. Language, Sound, Brightness:	3
2. DEVICE INTRODUCTION:	4
3. DEVICE USE:	5
3.1. VIEWING DEFINED FREQUENCY VALUES:	5
3.2. MANUAL SEARCH	6
3.3. AUTOMATIC SEARCH	7
3.4. SETTINGS.....	12
3.5. ABOUT US.....	13

1. GENERAL FEATURES:



The UXO CP PRO 7 Field Scanner is the true detector field treasure hunters dream of. It is scanning. It was developed after years of hard research, taking into account the needs of treasure hunters.

The UXO CP PRO 7 field scan device works as a transmitter and receiver. Thanks to its ability to classify received signals, UXO CP PRO 7 can achieve the success of field scanning device and field scanning detectors on its own.

1.1. Frequency Generator:

The UXO CP PRO 7 device is produced with frequencies determined for gold, silver, bronze, copper, phosphorus, iron, aluminum and jewellery. However, it also allows you to manually change frequencies. With the help of cables from two connectors on the device, signal transfer to the electrodes can be provided.

1.2. Language, Sound, Brightness:

It supports 4 different language options in total. Also volume on/off adjustment and display. It also has features such as controlling the brightness.

2. DEVICE INTRODUCTION:

The UXO CP PRO 7 Field Scanner is the true detector field treasure hunters dream of. It is scanning. It was developed after years of hard research, taking into account the needs of treasure hunters. The UXO CP PRO 7 field scan device works as a transmitter and receiver. Thanks to its ability to classify received signals, UXO CP PRO 7 can achieve the success of field scanning device and field scanning detectors on its own.

UXO CP PRO 7 device front panel 7" TFT touch screen for battery indicator
It consists of voltmeter, on-off switch, charging socket, signal outputs for frequency generator.



3. DEVICE USE:

3.1. VIEWING DEFINED FREQUENCY VALUES:

The screen encountered when the device is turned on with the help of the on-off switch is the opening screen. Selected automatic and manual signal generator information appears on the main screen. In addition, menu, frequency and volume control has buttons.



When the FREQUENCY button is pressed on the main screen, the frequency values of the objects defined to the device will be displayed.



3.2. MANUAL SEARCH

The screen encountered when the device is turned on with the help of the on-off switch is the opening screen. On the home screen selected automatic and manual signal generator information is displayed. In addition, menu, frequency and volume control has buttons.



In order to define the frequency values displayed on the previous screen to the device, first the MENU button must be pressed.



The Manual Signal Generator screen should be opened by pressing the MANUAL button on the screen that opens.



After the desired frequency value is written with the numeric keys, the REGISTER key should be pressed to save. When returning to the main screen, ACTIVE text should be displayed for Manual Signal Generator mode. Then, the relevant probes for the Manual Signal Generator are attached and the connection to the piles previously driven into the ground is completed. The device should remain on for a minimum of 45 minutes and should not be interfered with in this mode. Then the search can be started with the help of a handheld eliminator.

3.3. AUTO SEARCH

The screen encountered when the device is turned on with the help of the on-off switch is the opening screen. Selected automatic and manual signal generator information appears on the main screen. In addition, menu, frequency and volume control has buttons.



If it is desired to search for the automatically selected object, the Main Menu is entered by pressing the MENU button first.



On the screen that opens, first of all, the object to be searched must be selected by pressing the Metal button.



Select the relevant object on the screen that opens.



If desired, it can be displayed in other objects with the help of the Other button.



After selecting the products, the relevant soil type should be selected by pressing the Soil Type button this time. If it is not possible to comment on the soil type, Normal can be selected.



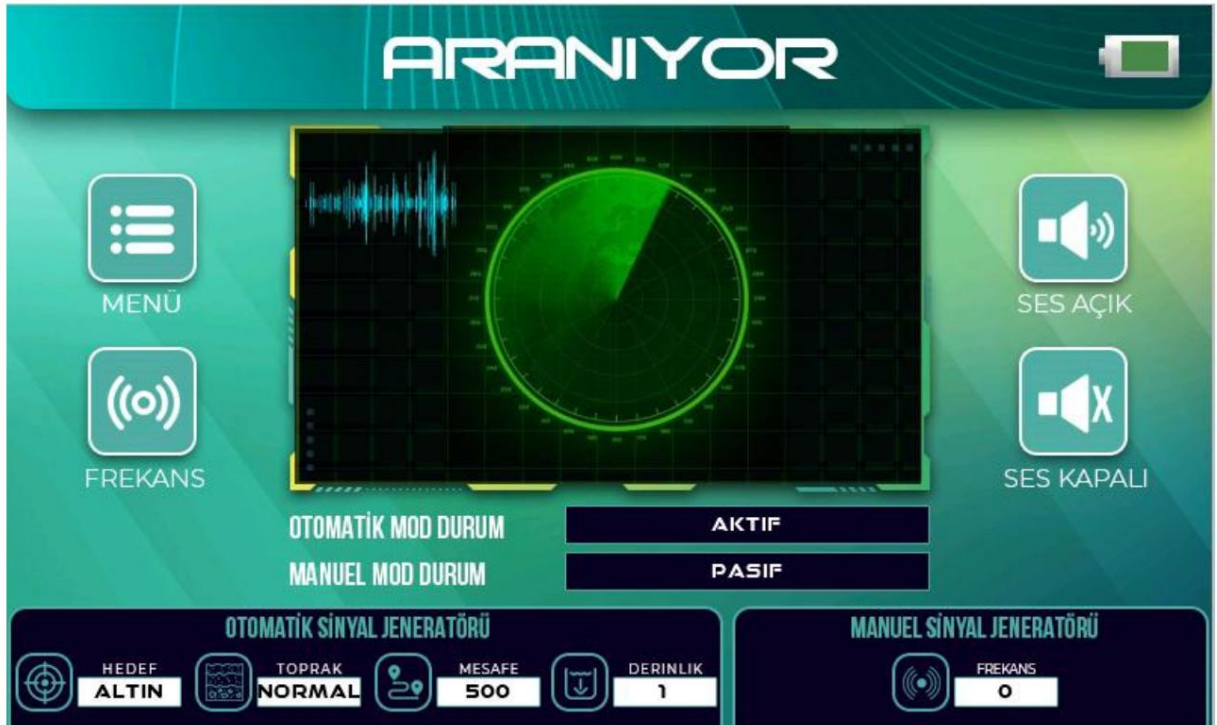
After the soil type setting, distance information should be selected with the help of right and left arrows by pressing the Distance button from the relevant menu.



After selecting the distance information, the depth information should be selected with the help of the right and left arrows by pressing the Depth button from the relevant menu.



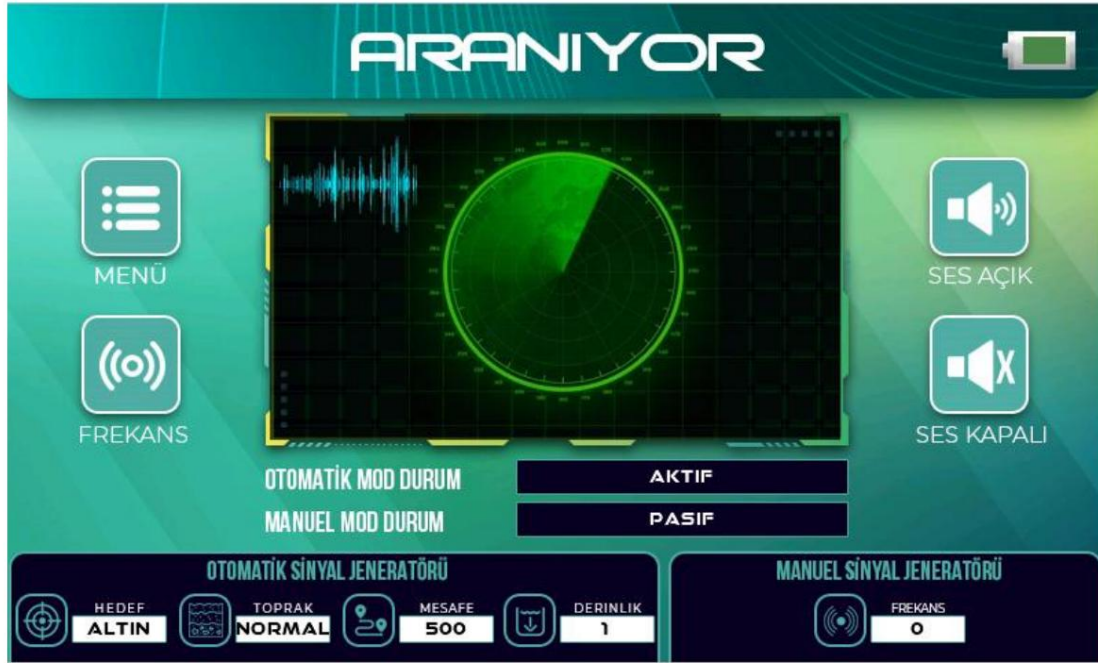
After all selections have been made, you should return to the Main Screen. When returning to the main screen, ACTIVE should be displayed for the Automatic Signal Generator mode.



Then, the relevant probes for the Automatic Signal Generator are attached and the connection to the piles previously driven into the ground is completed. The device should remain on for a minimum of 45 minutes and should not be interfered with in this mode. Then the search can be started with the help of a handheld eliminator.

3.4. SETTINGS

The screen encountered when the device is turned on with the help of the on-off switch is the opening screen. On the home screen selected automatic and manual signal generator information is displayed. In addition, menu, frequency and volume control has buttons.



If you want to make settings related to the device, first the MENU button and then the SETTINGS button should be pressed. Sound, Brightness and Language options can be adjusted on the screen that opens. Volume will be adjusted each time the SOUND button is pressed for volume control. Brightness intensity will be adjusted each time the Brightness button is pressed for brightness control. Pressing the language button will switch to other language options.



3.5. ABOUT US

The screen encountered when the device is turned on with the help of the on-off switch is the opening screen. On the home screen selected automatic and manual signal generator information is displayed. In addition, menu, frequency and volume control has buttons.



When it is desired to follow the serial number and version of the device, first the MENU button and then the ABOUT US button is pressed. The screen that opens contains serial number and version information. To achieve the best results, you need to keep your device up-to-date.

